



CardAccess 3000 Server Installation V2.9.x

Note: This document is to be used on a new CardAccess 3000 server installation. If upgrading from an earlier version, refer to the appropriate CardAccess 3000 upgrade procedure.

REVISION – Rev A

DATE: 09/11/2012

CardAccess® 3000 



DISCLAIMER

Continental Instruments LLC makes no representations or warranties with respect to the contents hereof and specifically disclaim any implied warranties of merchantability or fitness for any particular purpose. Further, Continental Instruments LLC reserves the right to revise this publication and to make changes from time to time in the content hereof without obligation of Continental Instruments LLC to notify any person of such revision or changes.

Copyright © 2012 by Continental Instruments LLC. All rights reserved. No part of this publication may be reproduced, transmitted, transcribed, or stored in a retrieval system, without the prior written permission of Continental Instruments LLC, 355 Bayview Avenue, Amityville, NY 11701. Telephone: 631-842-9400 • FAX: 631-842-9135 • GSA# GS-07F-0039H.

This document contains proprietary information of NAPCO Security Technologies. Unauthorized reproduction of any portion of this manual without the written authorization of NAPCO Security Technologies is prohibited. The information in this manual is for informational purposes only. It is subject to change without notice. Companies, names and data used in examples herein are fictitious unless otherwise noted. NAPCO Security Technologies assumes no responsibility for incorrect information this manual may contain.

A NAPCO SECURITY TECHNOLOGIES COMPANY

Publicly traded on NASDAQ Symbol: NSSC

Visit our websites at

<http://www.cicaccess.com/>

<http://www.napcosecurity.com/>

<http://www.alarmlock.com/>

Table of Contents

Important Information - Must Read Prior To Starting Installation	4
Computer Specifications	5
Scope / CardAccess 3000 Server Installation	6
Automatic Database Creation	22
Readme	23
Appendix A – Installing Badging 3000 on a 64 bit computer	23

Important Information - Must be read before installing software.

- 1) This document pertains to a new CardAccess 3000 V2.9.x Server installation.
- 2) CardAccess 3000 Version 2.9.x supports either SQL2005 or SQL2008 R2. On a new installation, SQL 2008 R2 Express will be installed. If there is an existing version of SQL already installed (SQL 2005 or SQL 2008 R2, it will use the existing version. Any other versions of SQL are not supported and must be removed from the computer prior to installing the CardAccess 3000 V2.9.x.
- 3) As previously mentioned, a new installation will install SQL 2008 R2 Express. Refer to the recommended computer specifications to determine if a full version of SQL is recommended. On large systems, it is usually recommended to purchase and install the full version of SQL prior to the CardAccess 3000 installation.
- 4) Verify you have a physical security key or a software license for CardAccess 3000 V2.9.x. Security keys and software licenses from previous versions of CardAccess 3000 are not compatible with V2.9.x. Note: If you have a V.2.8 security key, it will work on V2.9.x.

VERY IMPORTANT: Do not insert the hardware security key in the USB port until the installation of CardAccess 3000 is complete.

- 5) If the EPI Badging 3000 has been purchased, it is highly recommended to install it on a CardAccess 3000 workstation. If EPI Badging 3000 is installed on the CardAccess 3000 host, the performance might be degraded.

VERY IMPORTANT: If you are installing the EPI Badging 3000 software on a 64 bit computer, you **MUST** follow the additional configuration instructions referenced in Appendix A.

CA3000 v2.9.x Server/Host PC Recommendations REV A

	Server (1-4 Workstations)	Server (5-19 Workstations)	Server (20-49 Workstations)
Processor	Pentium Dual Core, 2.6GHz (min)	Xeon Quad Core 2.0GHz (min)	2 x Xeon Quad Core 2.0GHz (min)
Ram	2.0 GB Min/ 3GB+ for Win7 and Win Server 2008 R2	4.0 GB Min	8 GB Min
Hard Drive	300 GB	500 GB	Raid 5 - 3 drives minimum
USB Ports	4 Min	4 Min	4 Min
Serial Ports	Optional - 1 expandable to 64	Optional - 1 expandable to 128	Optional - 1 expandable to 128
Parallel Ports	Optional - 1	Optional - 1	Optional - 1
Mouse	PS2 or USB	PS2 or USB	PS2 or USB
Monitor	17" SVGA (1024x768)	17" SVGA (1024x768)	17" SVGA (1024x768)
DVDROM	48x/16x	48x/16x	48x/16x
DVDR	24x/8x	24x/8x	24x/8x
Sound	Optional but Stand-Alone recommended	Optional	Optional
Network Card	100/1000 Mb NIC Ethernet	100/1000 Mb NIC Ethernet	100/1000 Mb NIC Ethernet
Operating System	Win XP Pro w/SP3, Win 7 Pro w/ SP1 32/64 bit, Win 2003 Server R2 w/SP2 32/64 bit or Win 2008 Server R2 w/SP2	Win XP Pro w/SP3, Win 7 Pro w/ SP1 32/64 bit, Win 2003 Server R2 w/SP2 32/64 bit or Win 2008 Server R2 w/SP2	Win XP Pro w/SP3, Win 7 Pro w/ SP1 32/64 bit, Win 2003 Server R2 w/SP2 32/64 bit or Win 2008 Server R2 w/SP2
Database	MSSQL 2005/2008 R2 Express or MSSQL Server 2005/2008 R2 for higher performance	MSSQL Server 2005/2008 R2 recommended	MSSQL Server 2005/2008 R2 recommended
Backup	Tape / CD / DVD / Network	Tape / CD / DVD / Network	Tape / CD / DVD / Network
System Size	This is the recommended PC server specification for a system with up to four workstations. It can be used for a stand-alone system, a workstation or a CA3000 Server. For high transaction environments some specifications may change.	This is the recommended PC specification for a CA3000 Server supporting up to nineteen workstations. For high transaction environments some specifications may change.	This is the recommended PC specification for a CA3000 Server supporting up to forty nine workstations. For high transaction environments some specifications may change. For larger systems please consult with Continental Access.
Notes:	(1) If using SQLExpress, the database size should not exceed 4GB. (2) Disk drive usage is dependent on the number of transactions kept in backup. (3) Additional RAM will improve performance (4) It is best to perform badging and other integration functions on a workstation, not the server.		

*** Salient Analog Capture cards are not supported on 64 bit operating systems. Other than a small Stand-Alone system, Continental Access does not recommend running Photo-badging, DVR/NVR Integration, Napco Integration, Scripting, or Dynamic Maps from a Host machine. Please refer to our Workstation Recommendation below for these specifications. ***

Scope

This document contains information regarding the installation of a CardAccess 3000 V2.9.x Server. Prior to the installation, you must verify the computer meets the specifications.

VERY IMPORTANT: The screenshots in this document were captured during a new CardAccess 3000 installation on a **Windows 7 – 64 bit computer**. The following screenshots will vary if the installation is being performed on a 32 bit computer or another supported operating systems.

CardAccess 3000 Server Installation

If auto start is enabled on your system, the **Auto Play** screen will display after inserting the CA3000 DVD in the DVD drive (Refer to Figure 1). Click "**Run Launch.exe**". Verify the **CardAccess 3000 Version 2.9 Setup** screen displays (refer to figure 3). Skip ahead to the steps following Figure 3.

Warning: If auto start is not enabled on your system, nothing will occur after inserting the CA3000 DVD. Follow the steps below to execute the program.

Click the **Start** menu on your PC. In the **Search Programs and Files** box or Start/Run box, type **d:\launch.exe** (Refer to Figure 2). After pressing ENTER, the **CardAccess 3000 Version 2.9 setup** screen will display (Refer to Figure 3).

Note: "d:" represents the DVD drive letter. This letter will be different depending on the drive letter of your DVD.



Figure 1.



Figure 2.



Figure 3.

Click on the **Install CardAccess 3000** button. The CardAccess 3000 Prerequisites will be installed if they are not currently on the computer.

Pre-requisites

NOTES:

- There can be up to seven prerequisites required to be installed. Older supported operating systems require more prerequisites to be installed (refer to figure 4).
- During the installation of the prerequisites, the computer might require a reboot. If you are prompted to reboot, click Yes or OK (refer to figure 6). After the computer reboots, the CardAccess 3000 setup program might need to be restarted manually (refer to figures 1, 2 and 3).

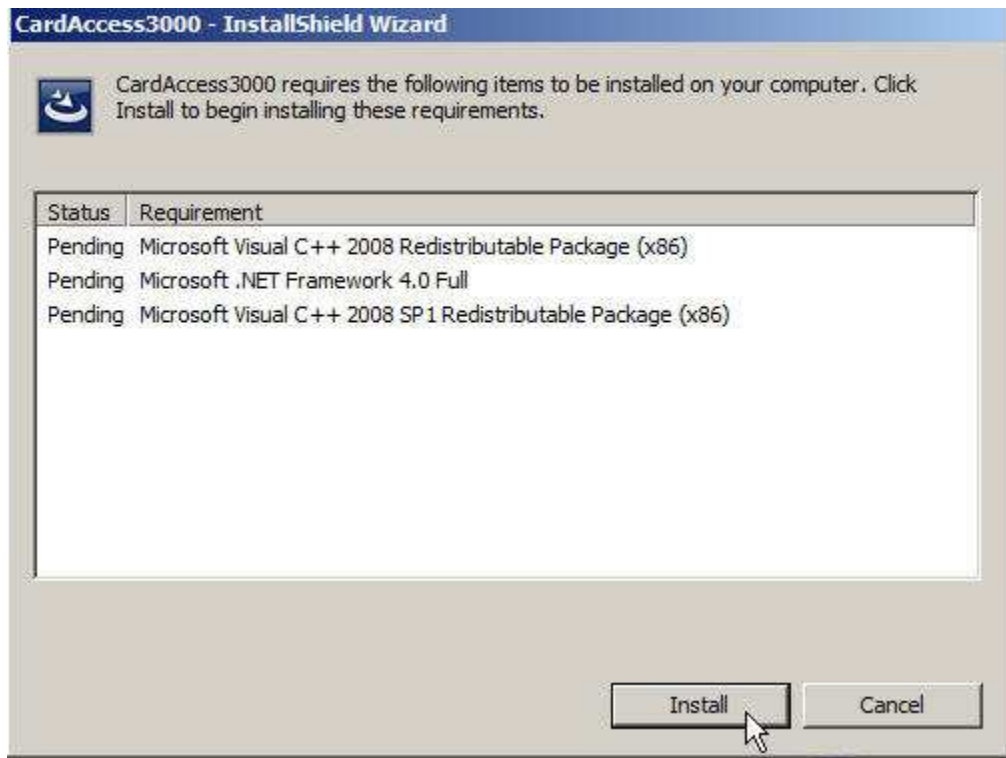


Figure 4.

Click **Install**. After clicking **Install**, a progress bar will display while the prerequisites are installing (Refer to figure 5).

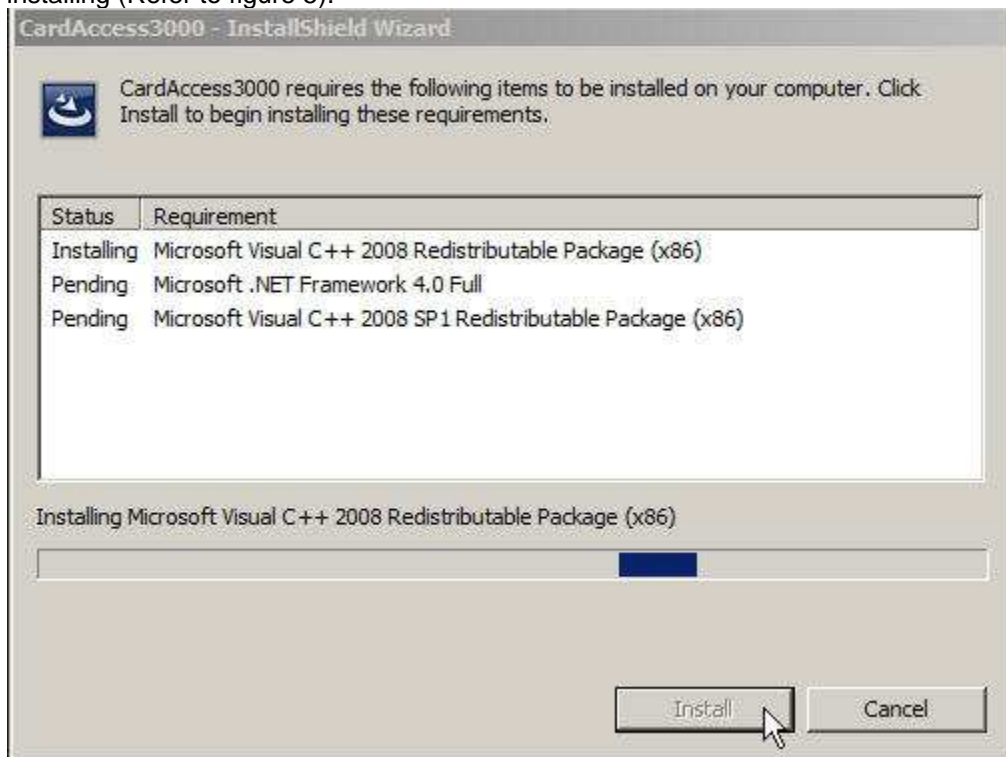


Figure 5.

Reminder: During the installation of the prerequisites, the computer might require a reboot. If you are prompted for a restart, click **OK**.



Figure 6.

After completion of the .NET Framework installation, the ADH Source Filter for DirectShow installation will begin (Refer to figure 7).

Reminder: If the ADH Source Filter for DirectShow is already installed on the computer, this process will be skipped.

ADH Source Filter for DirectShow (Pre-requisite)

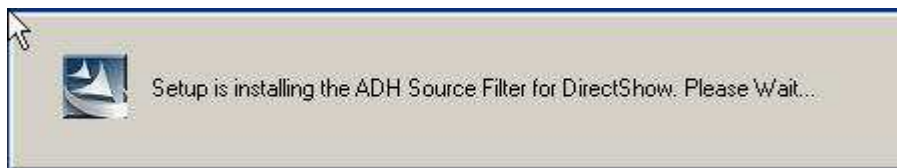


Figure 7.

Note: As part of the ADH Source Filter for DirectShow installation, the VC++ Run Time libraries will be installed if needed (Refer to figure 8).

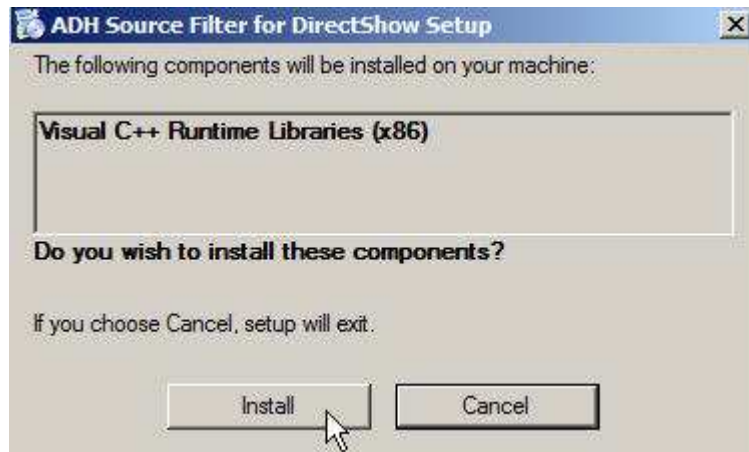


Figure 8.

Click **Install**. A progress bar will display while the **Microsoft Visual C++ 2005 Redistributable** Libraries for DirectShow are installing (Refer to figure 9).

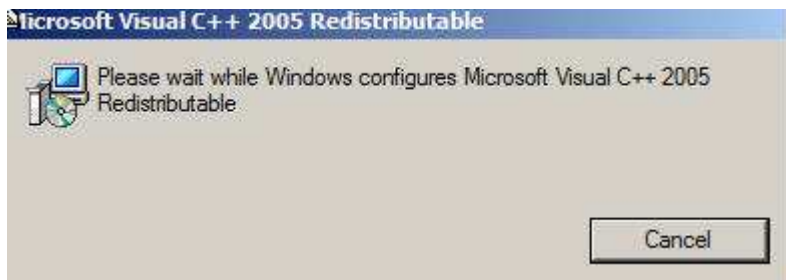


Figure 9.

After the completion of the Visual C++ libraries, the ADH **Source Filter for DirectShow Setup Wizard** will install (Refer to figure 10).



Figure 10.

Click **Next**. The **ADH Source Filter for DirectShow** Installation Folder screen will display (Refer to figure 11).

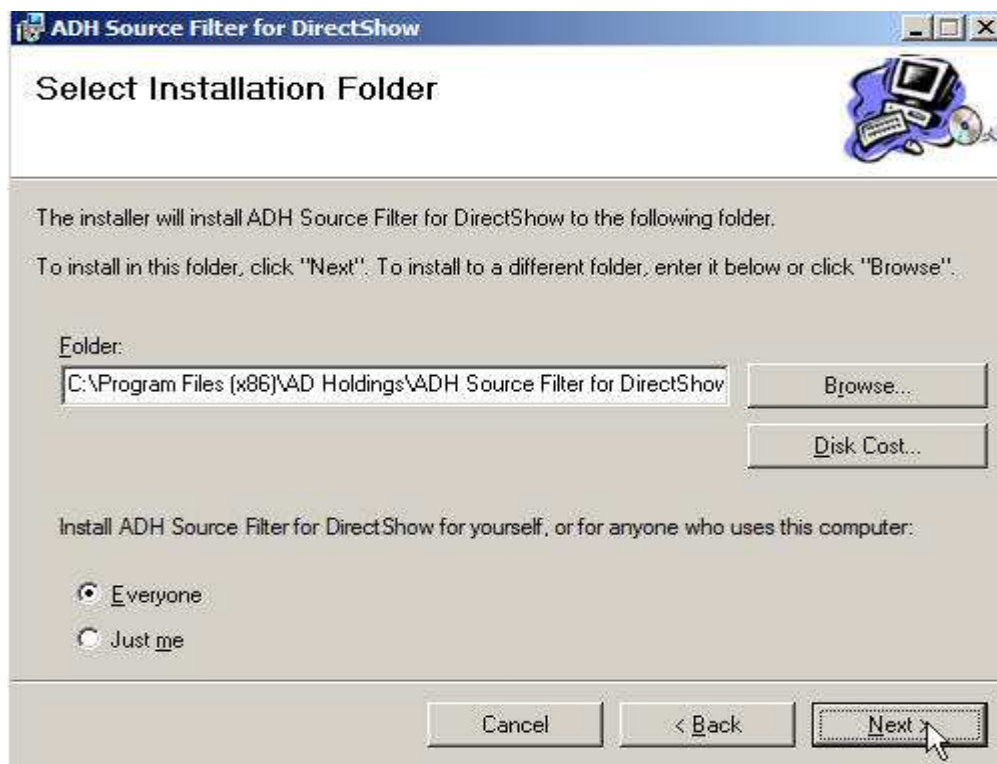


Figure 11.

Click **Next**. The **Confirm Installation** screen will display (Refer to figure 12).

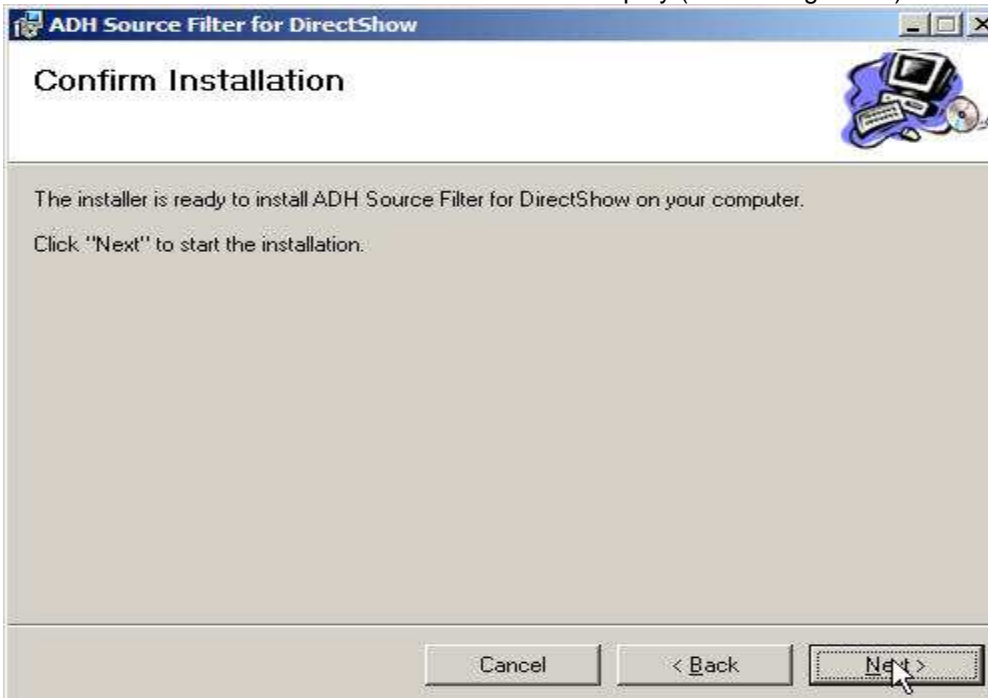


Figure 12.

Click **Next**. A progress bar will display while the **ADH Source Filter for DirectShow** installs (Refer to figure 13).



Figure 13.

At the completion of the **ADH Source Filter for DirectShow** installation, the **Installation Complete** screen displays (Refer to figure 14).

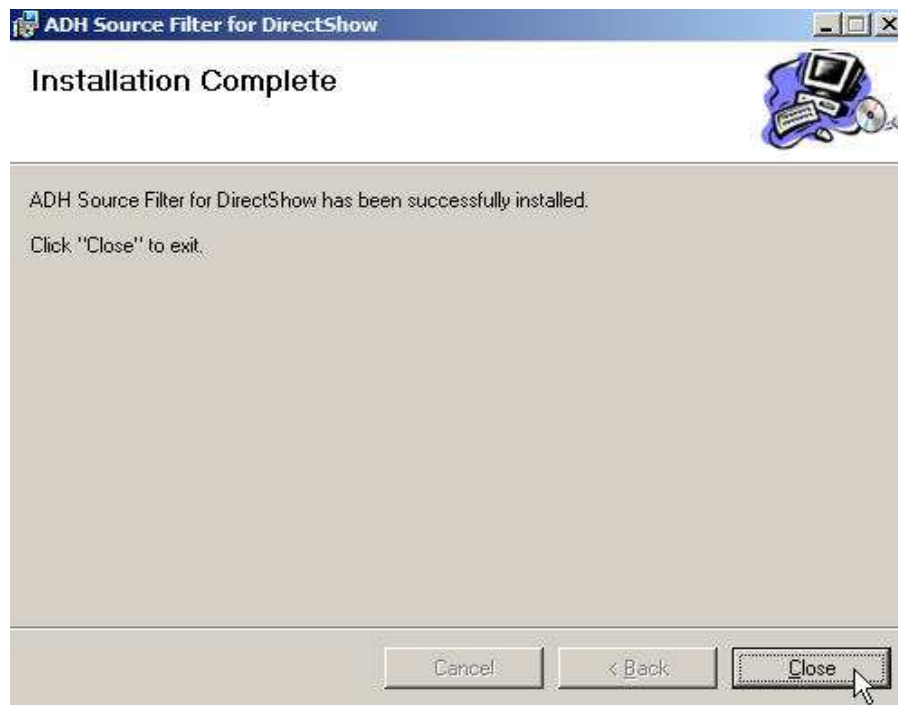


Figure 14.

Click **Close**.

CardAccess 3000 InstallShield Wizard

The CardAccess 3000 **InstallShield Wizard** screen will display for a short period while CardAccess 3000 is preparing to install. After the CardAccess 3000 **InstallShield** wizard is complete, the **Welcome to CardAccess 3000 setup program** screen displays (Refer to Figure 15).

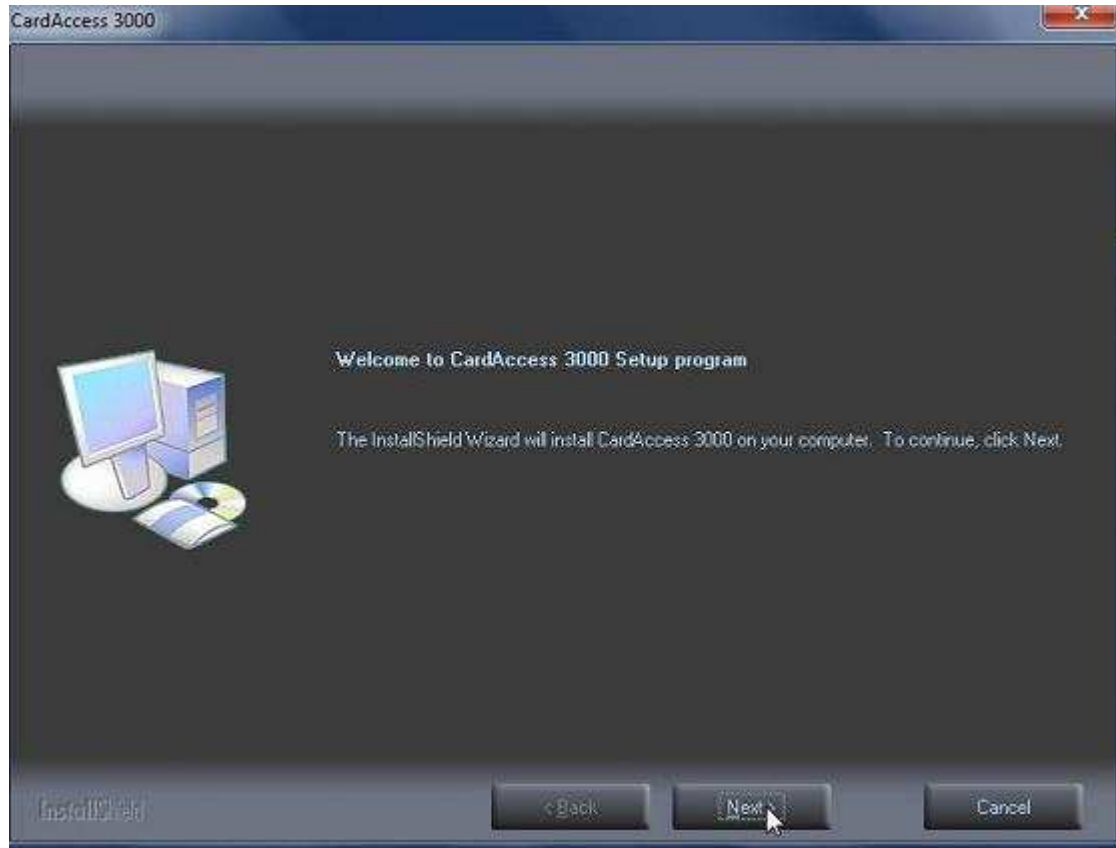


Figure 15.

Click **Next**. The **Select CardAccess Server Type** screen will display (Refer to Figure 16).

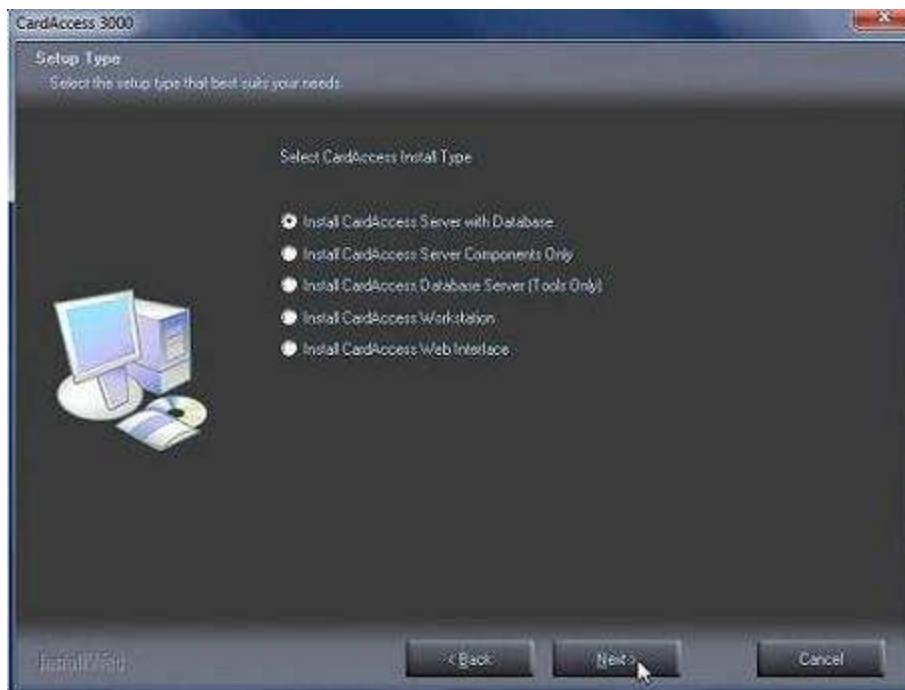


Figure 16.

Select the **Install CardAccess Server with Database** option (this option should be selected by default).

Click **Next**. The **Select CardAccess Destination Folder** screen will display (Refer to Figure 17).

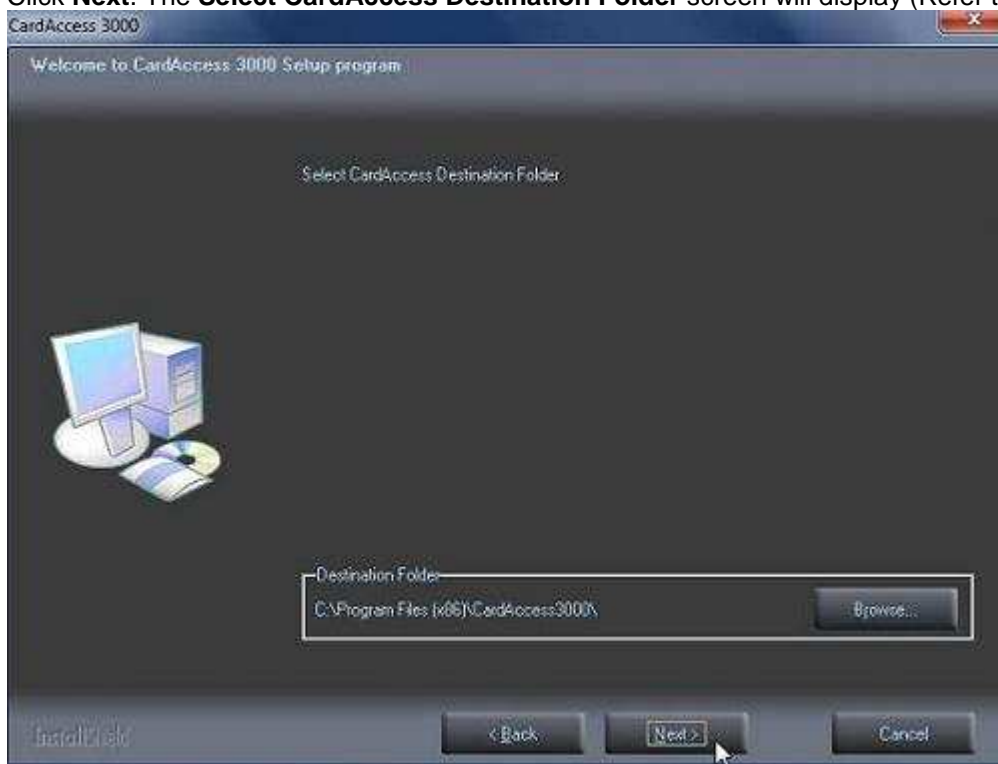


Figure 17.

The default installation path will display. If you are installing CardAccess 3000 to a different path, click the **Browse** button and select the path.

NOTE: The above screen shot is from an installation on a 64 bit computer. On a 64 bit computer, a second Program Files folder is created. The folder name is **Program Files (x86)**. CardAccess 3000 V2.9.x will be installed under this folder on a 64 bit computer.

Click **Next**. The **Select Additional CardAccess Components to be installed** screen will display (Refer to Figure 18).

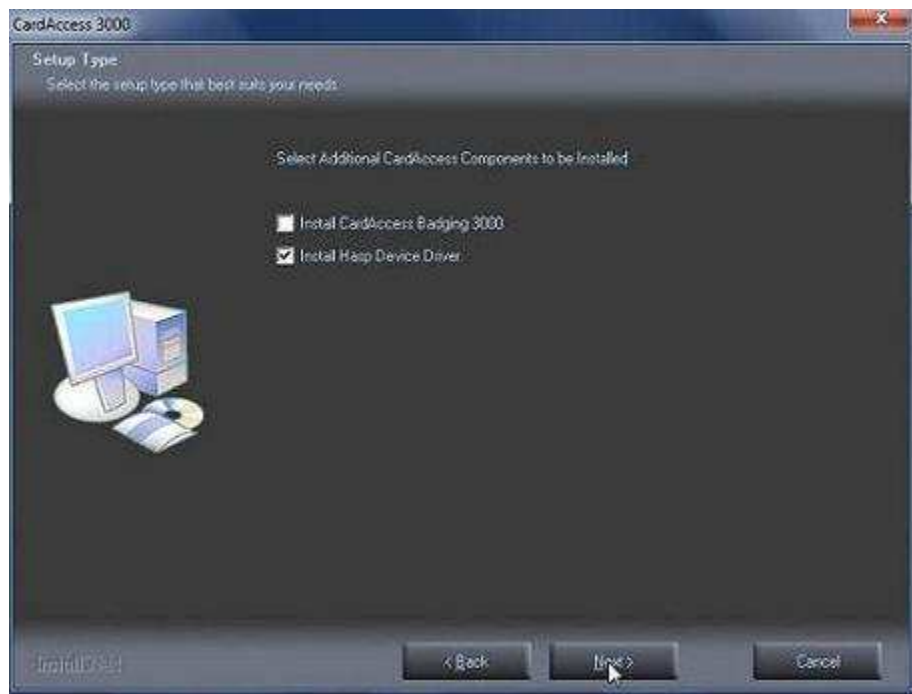


Figure 18.

By default, the **Install Hasp Device Driver** is the only option selected. It is not recommended to install the EPI Badging 3000 on a CardAccess 3000 Server. It is recommended to install EPI Badging 3000 on a CardAccess 3000 workstation. If you must install it on a CardAccess 3000 Server, you must select the option. If the EPI Badging 3000 is being installed on a 64 bit computer, you must follow the steps in Appendix A after the installation is complete.

Click **Next**. The **Current Settings** screen will display (Refer to Figure 19).

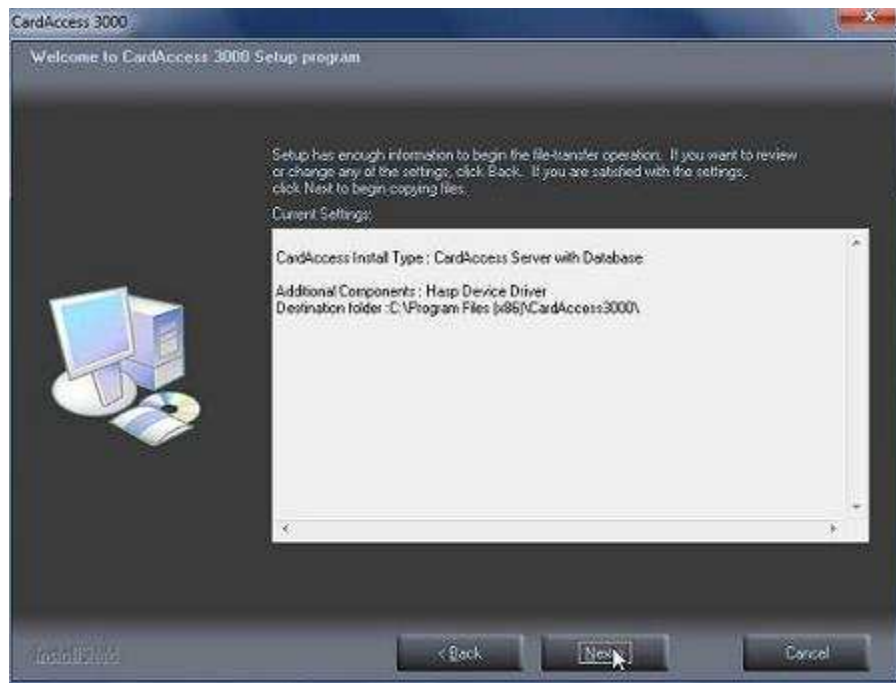


Figure 19.

After reviewing the current settings, click **Next**. A progress bar will display while the CardAccess 3000 is installing (Refer to Figure 20).

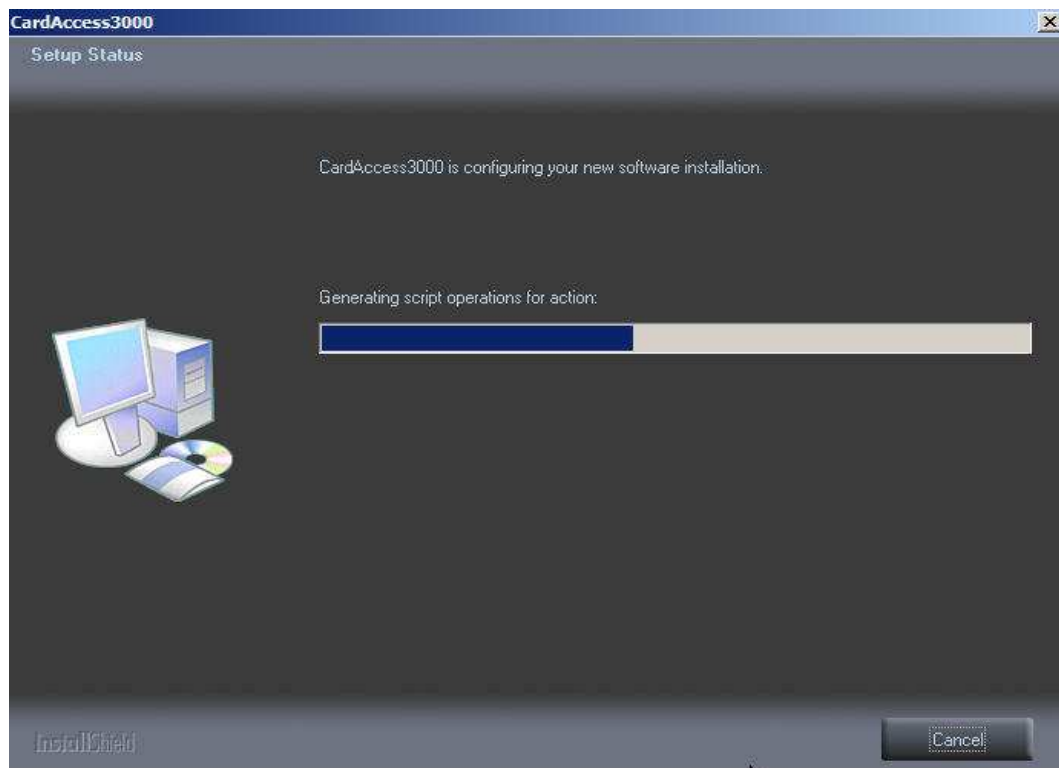


Figure 20.

After the completion of the CardAccess 3000 installation, the hasp driver will install (Refer to Figure 21).

NOTE: Do not put the security key on until the computer reboots at the end of the installation.

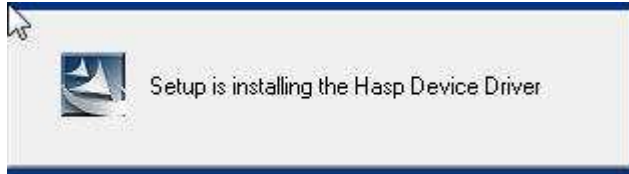


Figure 21.

After the completion of the **Hasp Device Driver**, the SQL Express 2008 installation will automatically begin.

SQL Express 2008 R2 Installation

During the installation of the **Microsoft SQL Server 2008 Express**, multiple screens will display (Refer to Figures 22, 23, 24 25 and 26).

NOTE: It is very important to verify no error messages display while SQL Server 2008 Express R2 is installing.

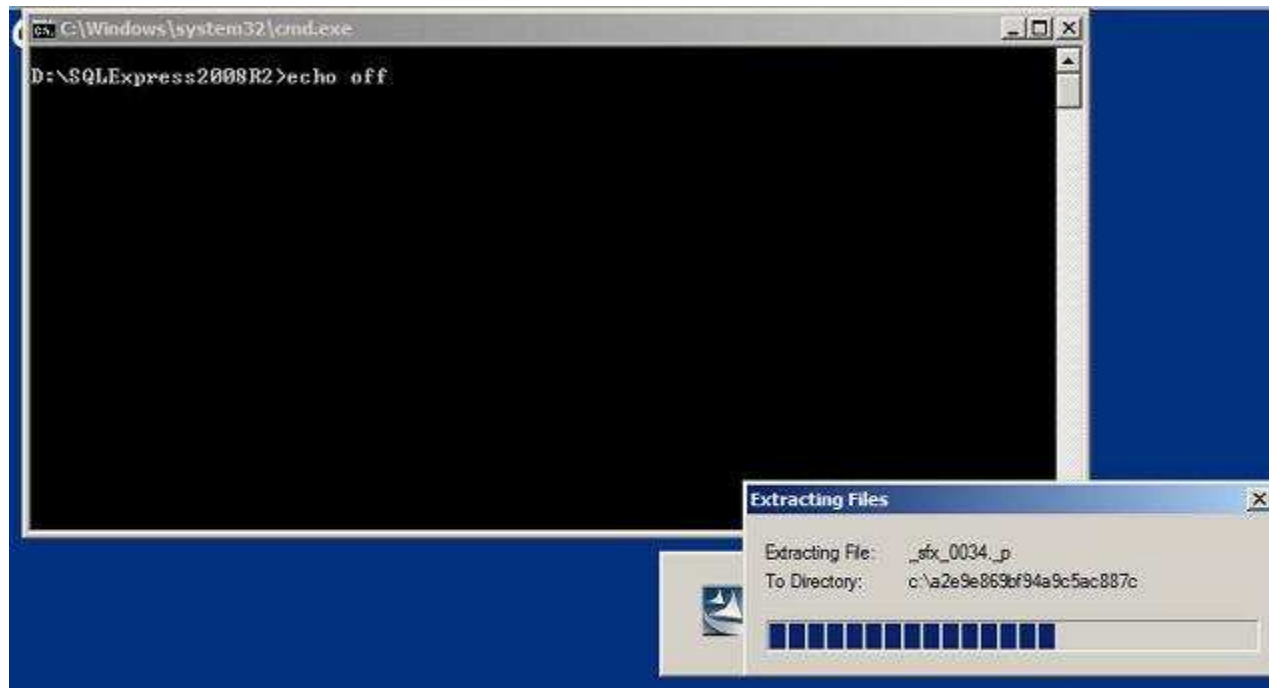


Figure 22.



Figure 23.

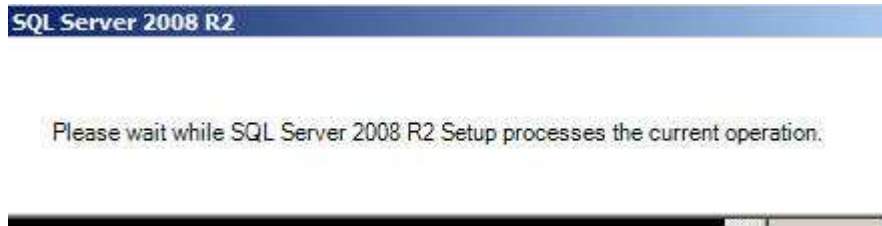


Figure 24.

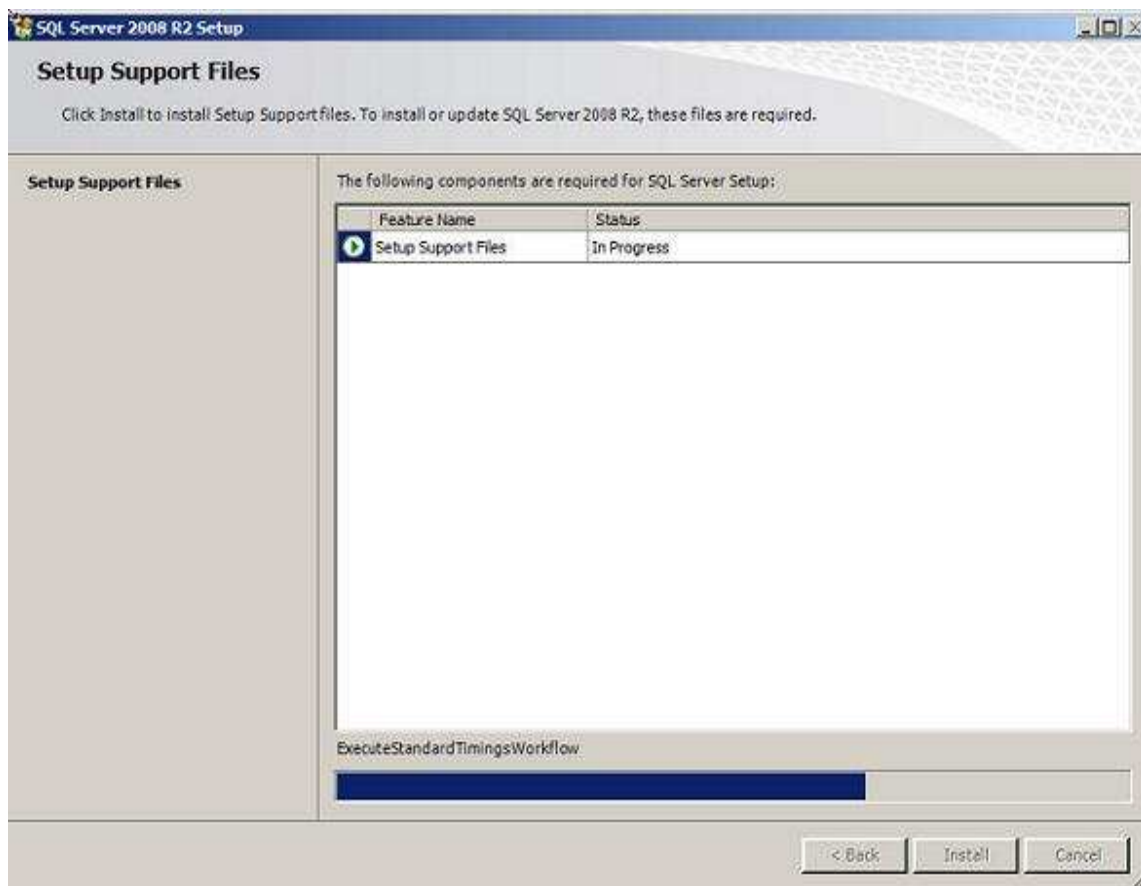


Figure 25.

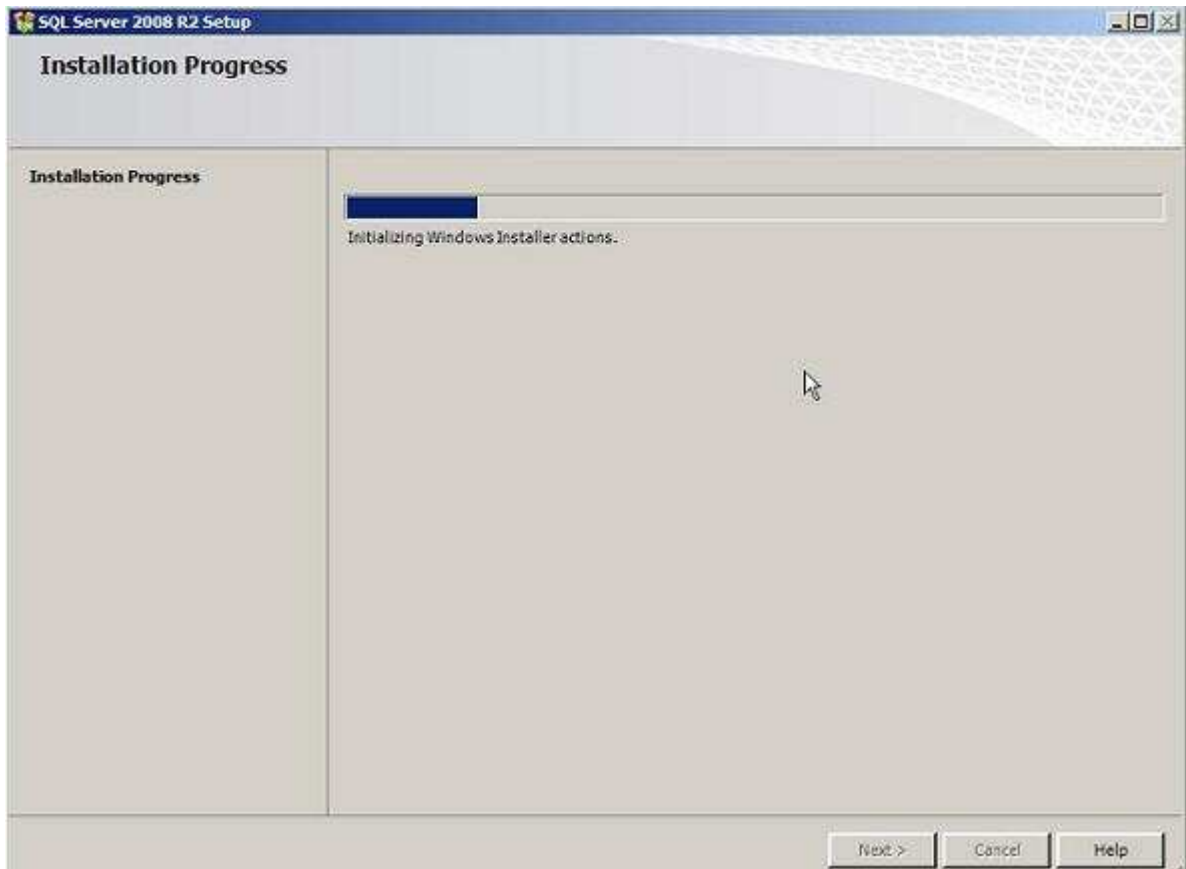


Figure 26.

At the completion of the SQL 2008 R2 Express, the **Setup is Creating new/update existing CardAccess database** screen will display (Refer to Figures 27).

Automatic Database Creation

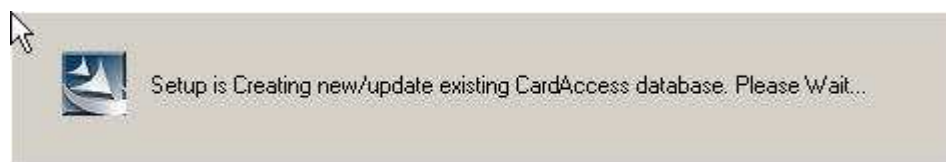


Figure 27.

After a few seconds, the **Automatic Database creation tool** screen will display (refer to figure 28).

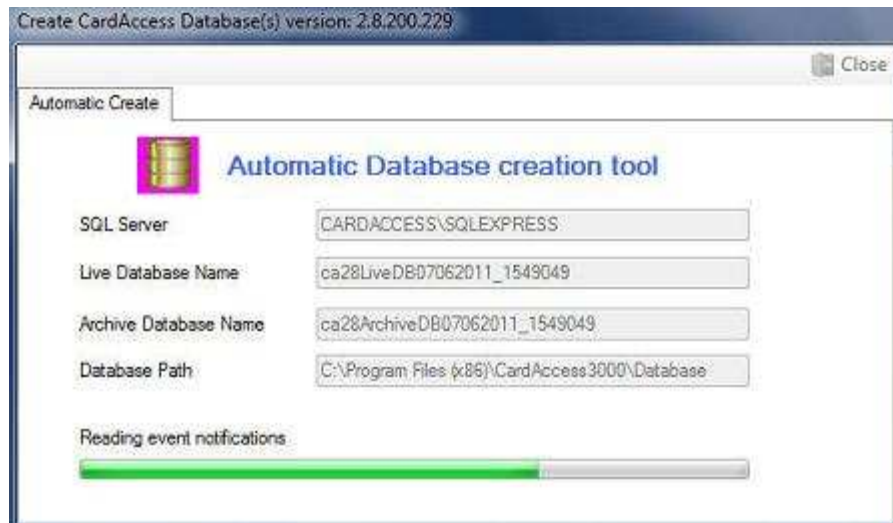


Figure 28.

NOTE: The database names will reference V2.9. The above screenshot is from a V2.8 installation.

This process will take a few minutes. A live and archive database will be created automatically. At the completion of the **Automatic Database Creation**, the **Readme Information** screen will display (Refer to figure 29).

VERY IMPORTANT: It is very important to read the Readme information for important setup information and known issues.

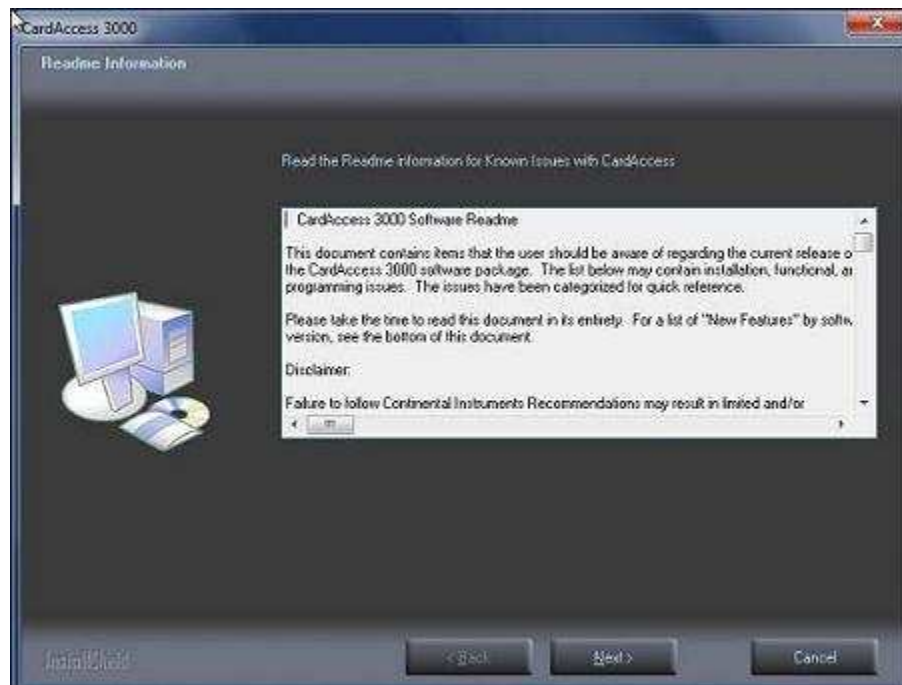


Figure 29.

After reviewing the Readme Information, Click **Next**. The **InstallShield Wizard Complete** screen will display (Refer to Figure 30).

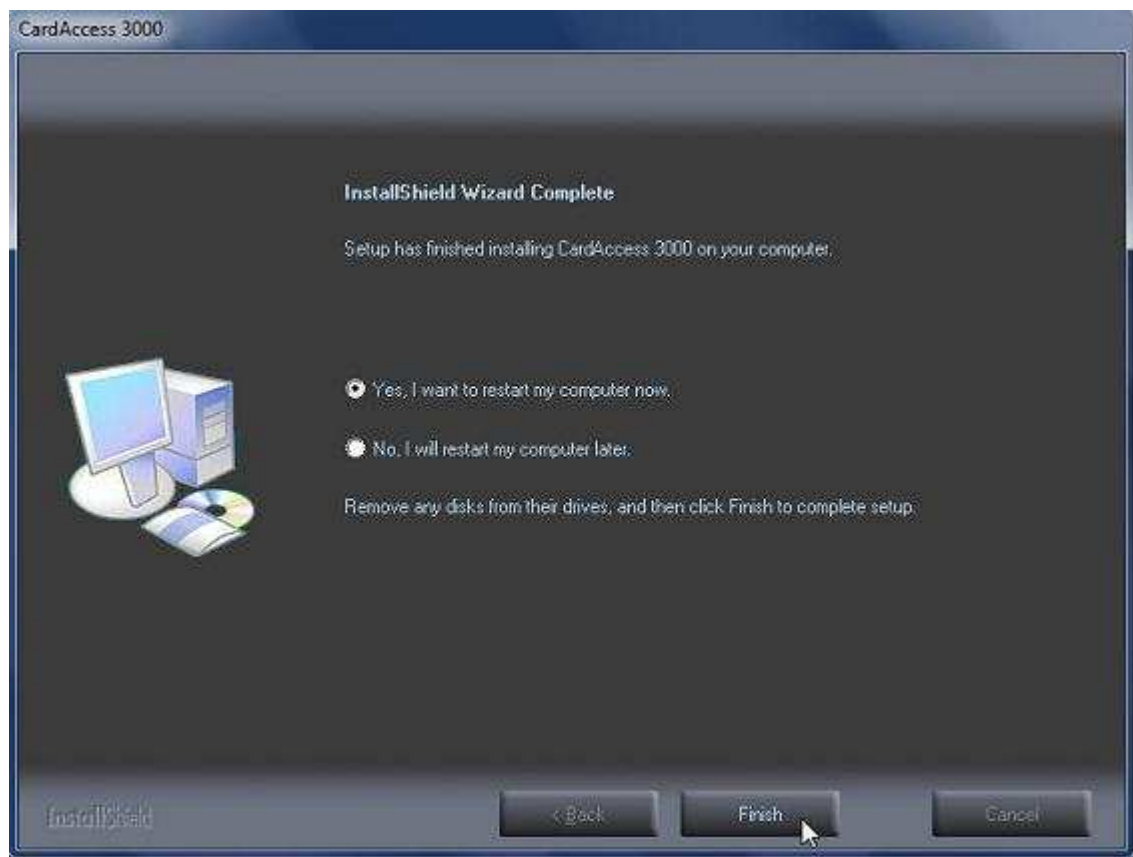


Figure 30.

Verify the **Yes, I want to restart my computer now** option is selected. This should be selected by default. Click **Finish**. The computer will restart.

After the computer reboots, a message will display (**If you are using a hardware dongle, please insert it now**). If you purchased a physical USB security key, insert the security key into the USB port. You should see a **New hardware has been detected** message display.

The next screen to display will be the **CardAccess 3000 license Manager** screen. If you were supplied a license file for software licensing, you will need to copy the license file to the desktop. After the license file is on the desktop, you must **import, activate** and **register** the software license. These selections can be found on the menu items of the CardAccess 3000 license manager.

The CardAccess installation is now complete.

Appendix A

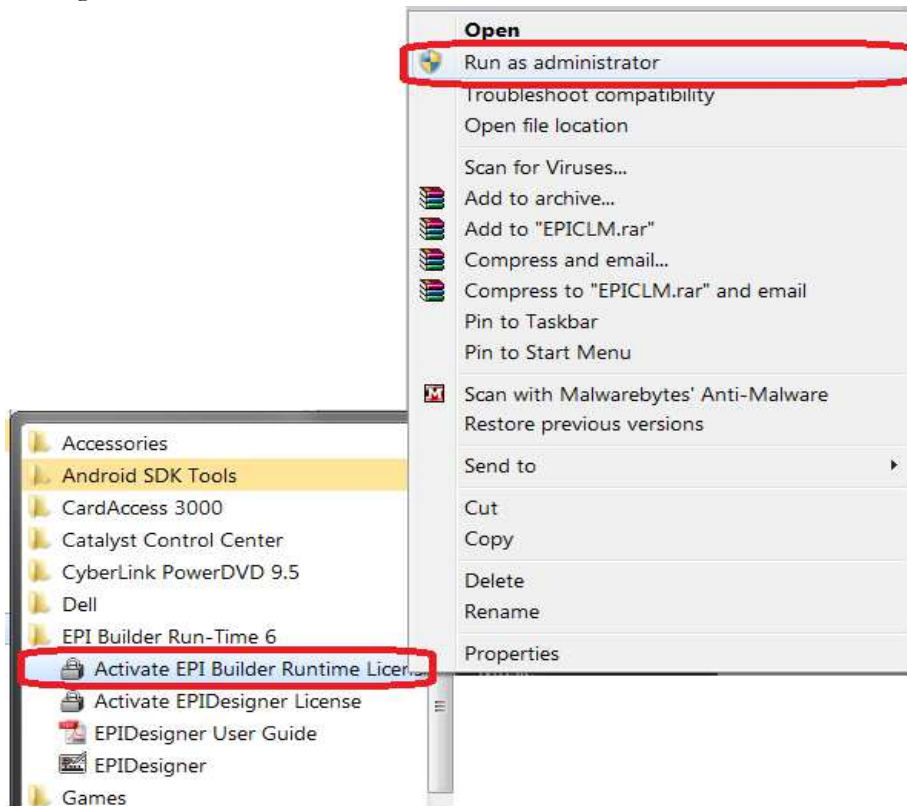
CardAccess 3000 EPIBuilder Badging software installation guide for 64 bit Windows Operating system

Scope:

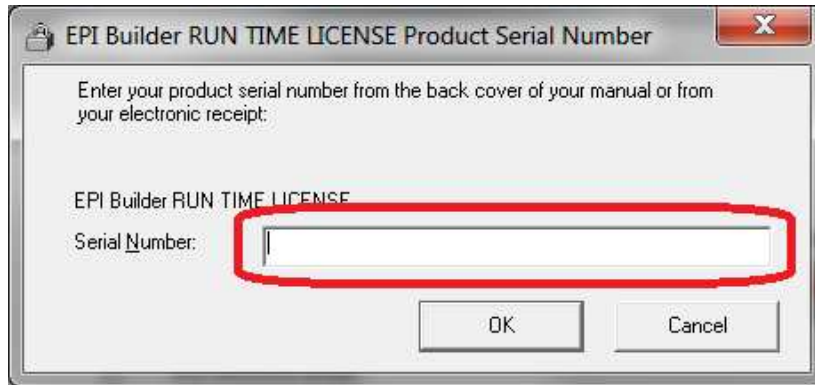
This document describes the steps involved in configuring EPIBuilder Badging software to work on 64 bit Windows operating system. Generally any 32 bit software application should work on 64 bit Operating system unless there are problems with device drivers, etc. However, since 64 bit operating system uses different folder structure, user privileges etc. In some cases it is required to have specific settings for 32 bit user applications to work on 64 bit OS. The steps below guide you through the configuration of EPIBuilder Badging application on 64 bit Windows Operating system.

Steps:

1. **Install Badging Software:** Install the CardAccess3000 software with EPIBuilder check box checked during installation. Installation should be performed with **Local administrator** privileges.
2. **Activate EPIBuilder software licenses:** There are two licenses named as “EPIBuilder Run Time” and “EPIBuilder Designer”. These two licenses should be activated.
 - a. To activate EPI Builder Run-Time license, Go to *Start->All Programs->EPI Builder Run-Time 6* and right click on “*Activate EPIBuilder Runtime License?*” and click “**Run as Administrator**”.

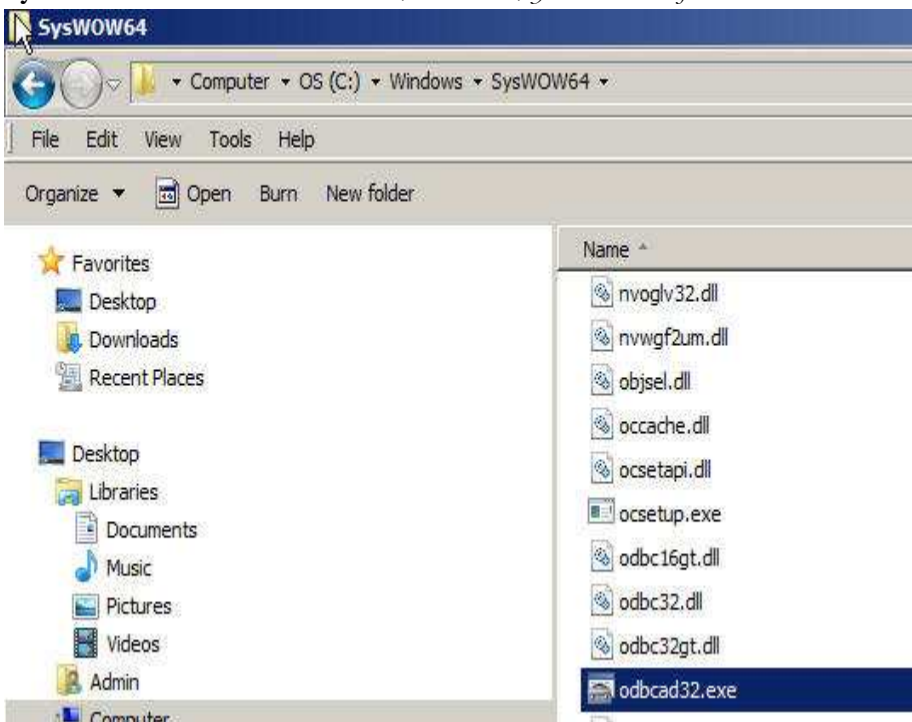


- b. In the activation window enter the serial number provided and click ok.

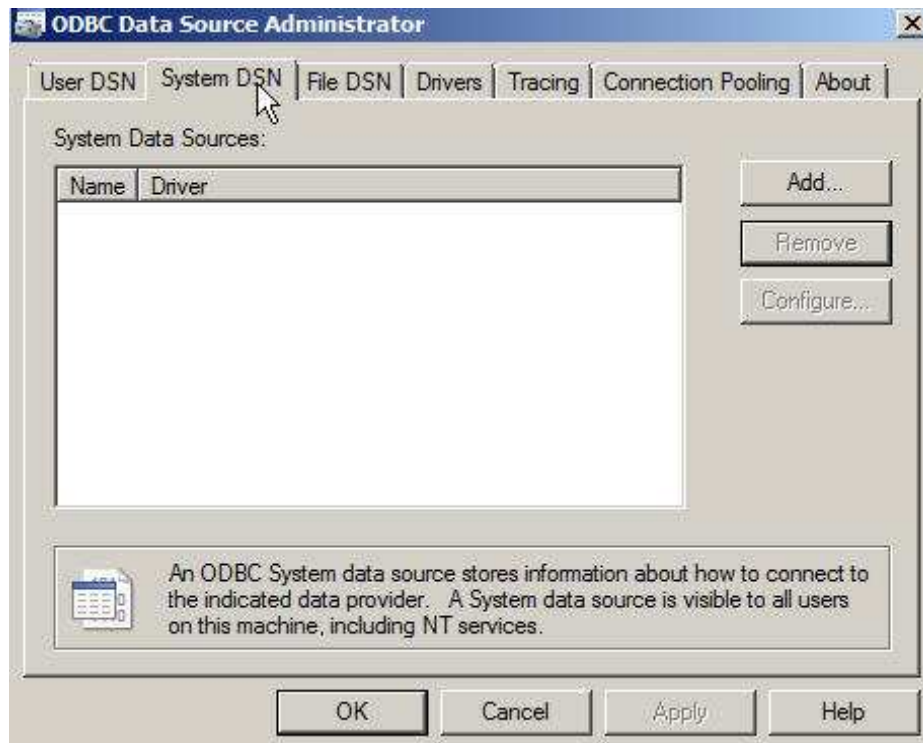


NOTE: It is important to Run as administrator to activate the license on 64 bit operating system. Also, it is recommended to perform phone activation since internet activation might fail if firewall blocks access to activation server.

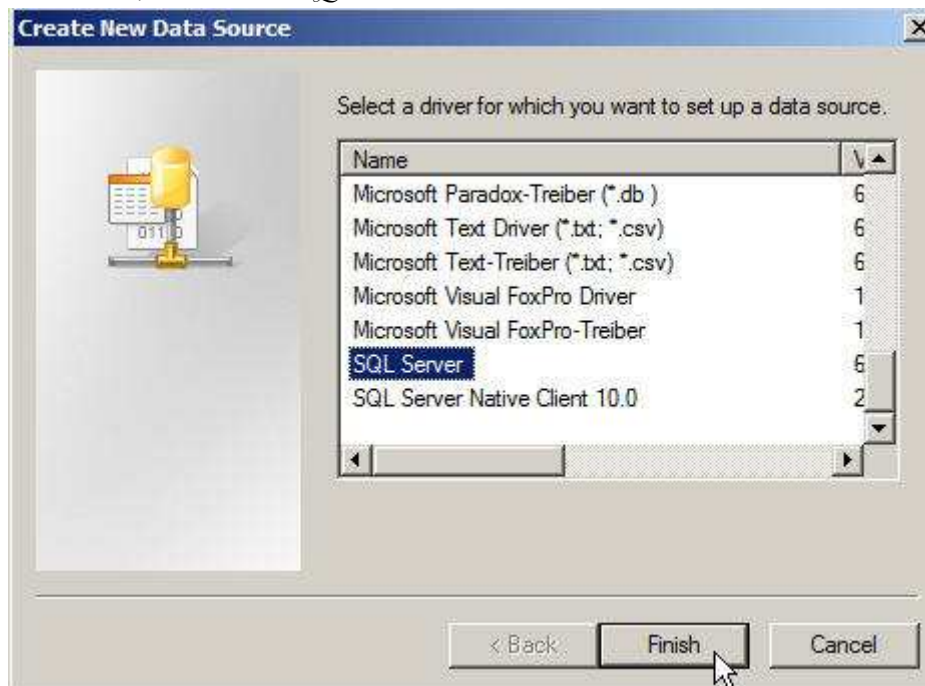
- c. Repeat the same for EPIBuilder Designer license.
3. **Create ODBC DSN name** (On a 64 bit computer, you must use the `odbcad32.exe` in the **SysWow64** folder. Go to "`C:\Windows\SysWOW64` folder. Double click `odbcad32.exe`).




- a. This will bring up the dialog box as shown below. Make sure "*System DSN*" tab is selected and Click the "*Add*" button to create a new DSN name.



- b. In the next screen, make sure "*SQL Server*" driver is selected and click the "*Finish*" button.



c. In the next dialog box, enter the DSN name to be “**Badging3000**” and select SQL Server name where cardAccess3000 software database is installed and click the “*Next*” button.



Create a New Data Source to SQL Server

This wizard will help you create an ODBC data source that you can use to connect to SQL Server.

What name do you want to use to refer to the data source?

Name:

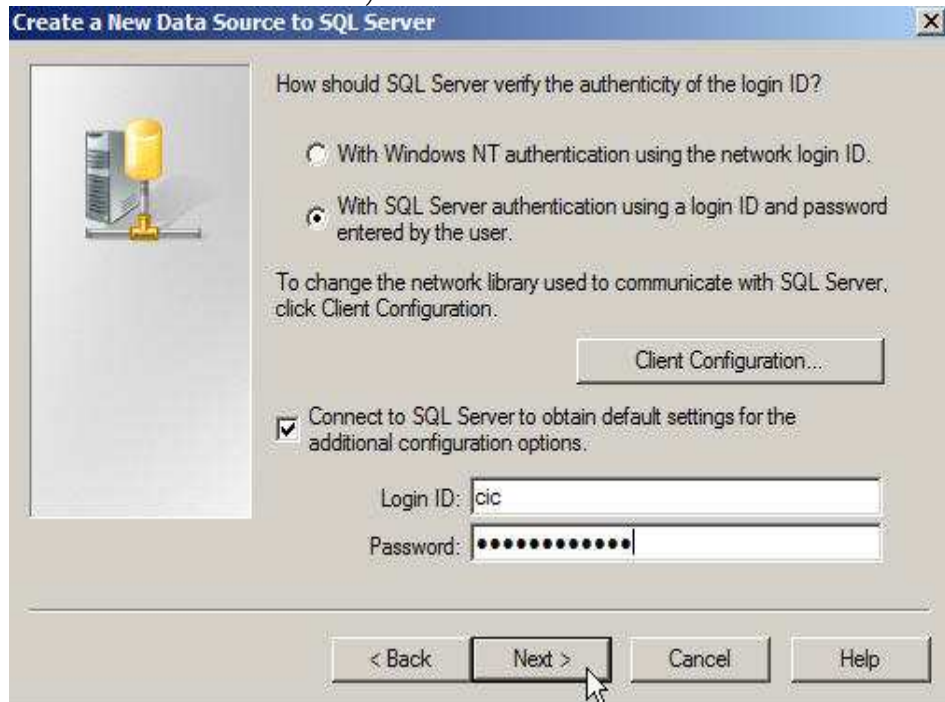
How do you want to describe the data source?

Description:

Which SQL Server do you want to connect to?

Server:

d. In the next screen, make sure “*With SQL Server authentication...*” is selected and enter the Login ID “*cic*” and password “*Cic!23456789*”. (This is the default SqlExpress user name and password in CardAccess 3000 V2.8.2 and V2.9) and Click the “*Next*” button.



Create a New Data Source to SQL Server

How should SQL Server verify the authenticity of the login ID?

☐ With Windows NT authentication using the network login ID.

☒ With SQL Server authentication using a login ID and password entered by the user.

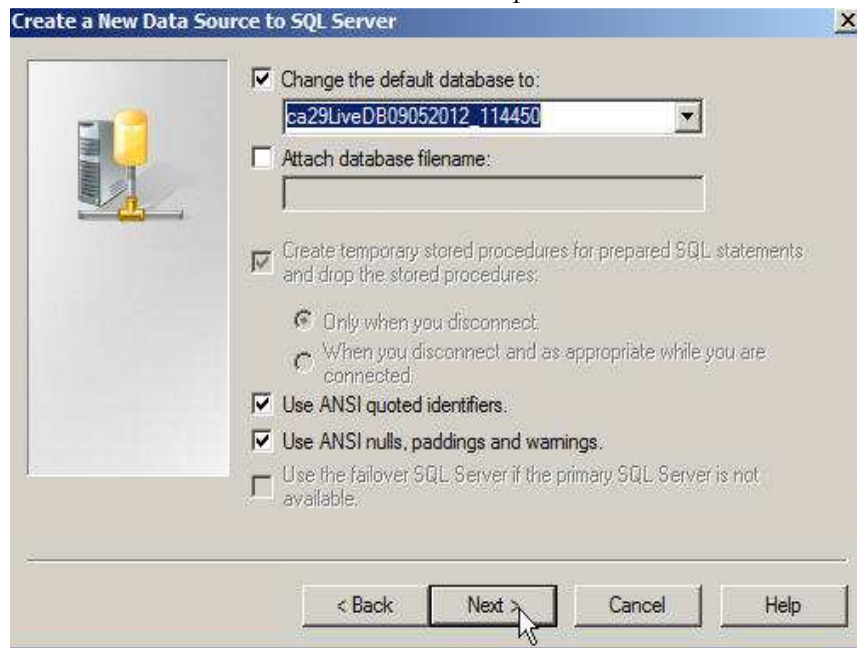
To change the network library used to communicate with SQL Server, click Client Configuration.

☒ Connect to SQL Server to obtain default settings for the additional configuration options.

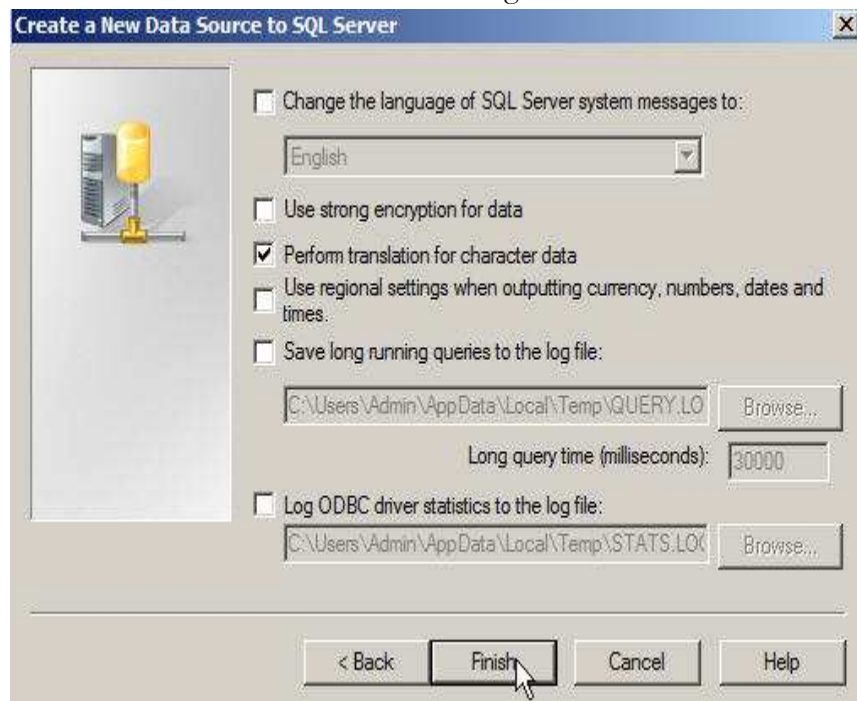
Login ID:

Password:

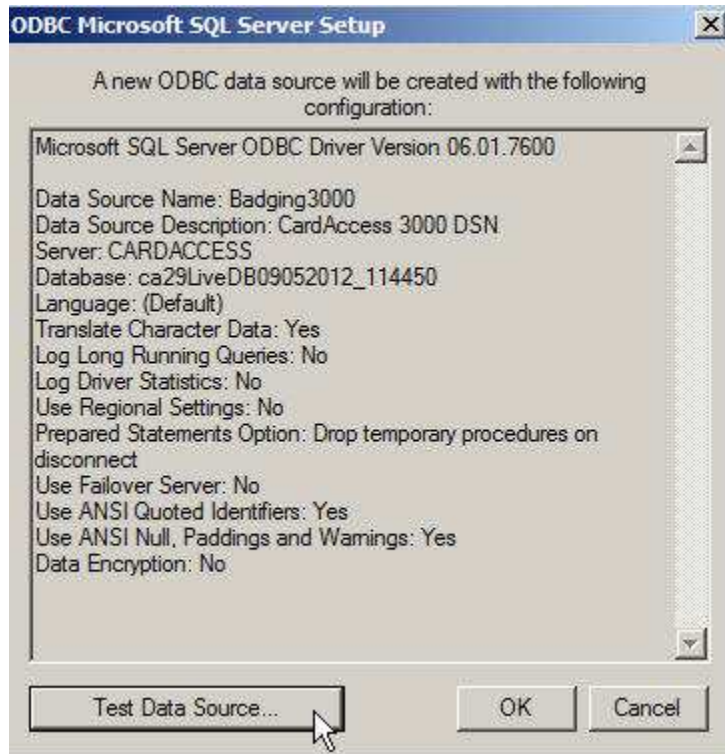
- e. In the next screen, make sure “*Change the default database to*” is checked and select the CardAccess3000 live database from the dropdown list. Leave all other settings unchanged.



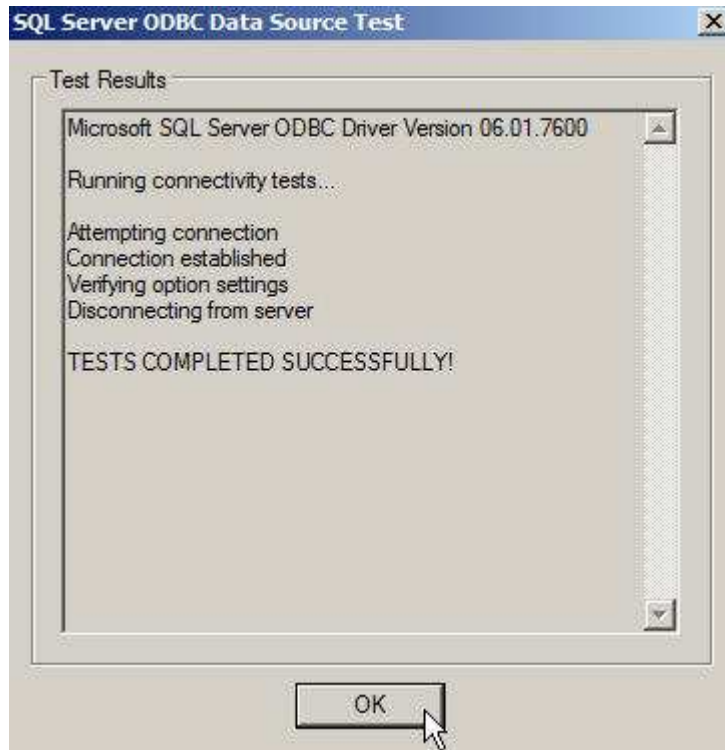
- f. In the Final screen leave all defaults settings and click “*Finish*” button.



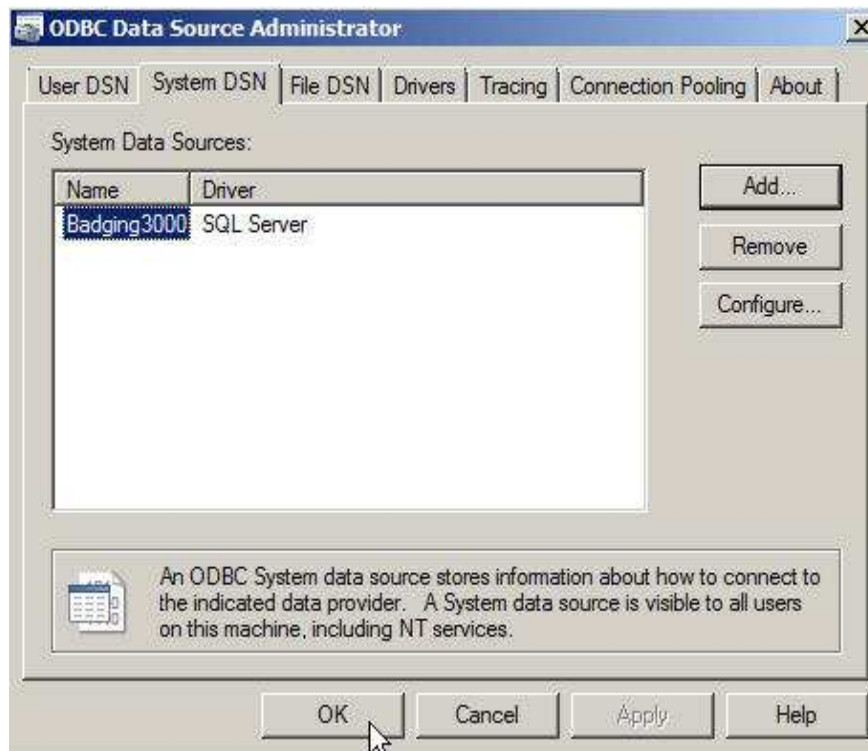
g. The “*Test Data Source*” screen displays. Click “*Test Data Source*” button.



h. Verify the message “*TESTS COMPLETELY SUCCESSFULLY*” displays. If there are any failures, verify all the previous steps are configured properly.



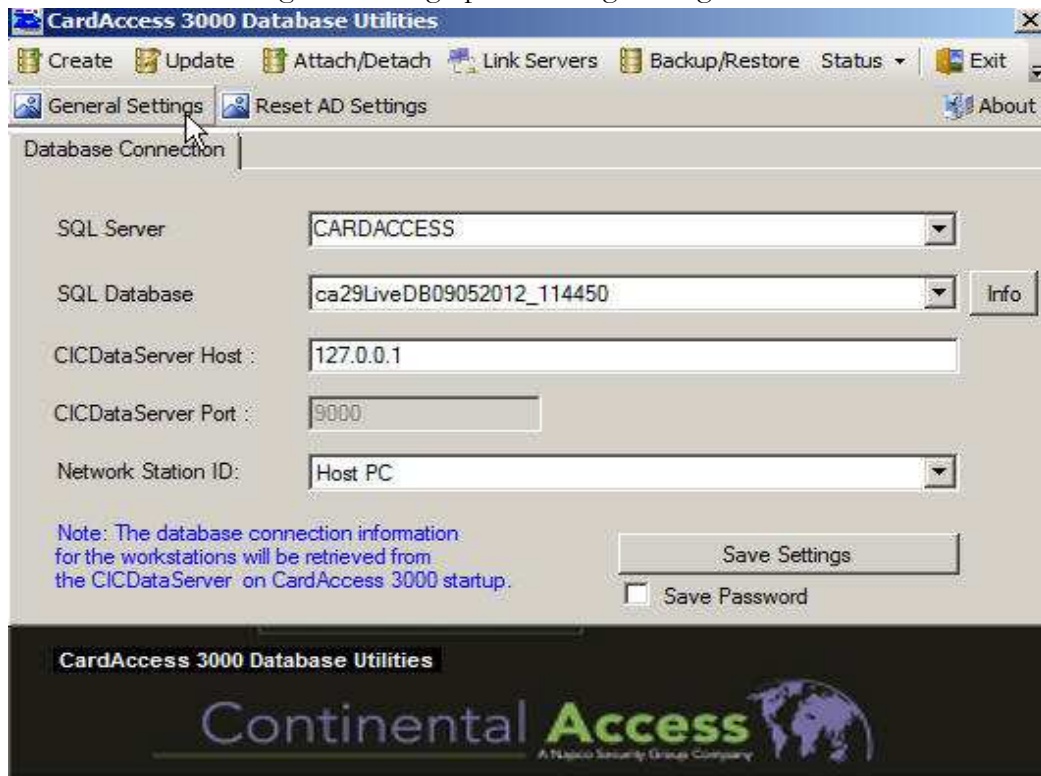
I. Click "OK". Now the ODBC Data Source window should show a System DSN Name "**Badging3000**" and Driver "**SQL Server**".



4. **Configure CardAccess3000 software for badging:** CardAccess3000 software should be configured to point to badging ODBC DSN name, EPIBuilder license path and EPIBuilder executable path. CardAccess3000 software automatically will configure EPIBuilder software to points to the same database so that both applications can share the data.
- Make sure CardAccess software is not running and “CIC Data Server” is shut down. (Refer card Access3000 manual for further detail).
 - Go to windows “Start->All Programs->Card Access 3000->Tools” and launch CardAccess Utilities. The password for the CardAccess 3000 Database Utilities is “pr1532”. After typing the password, click “OK”.

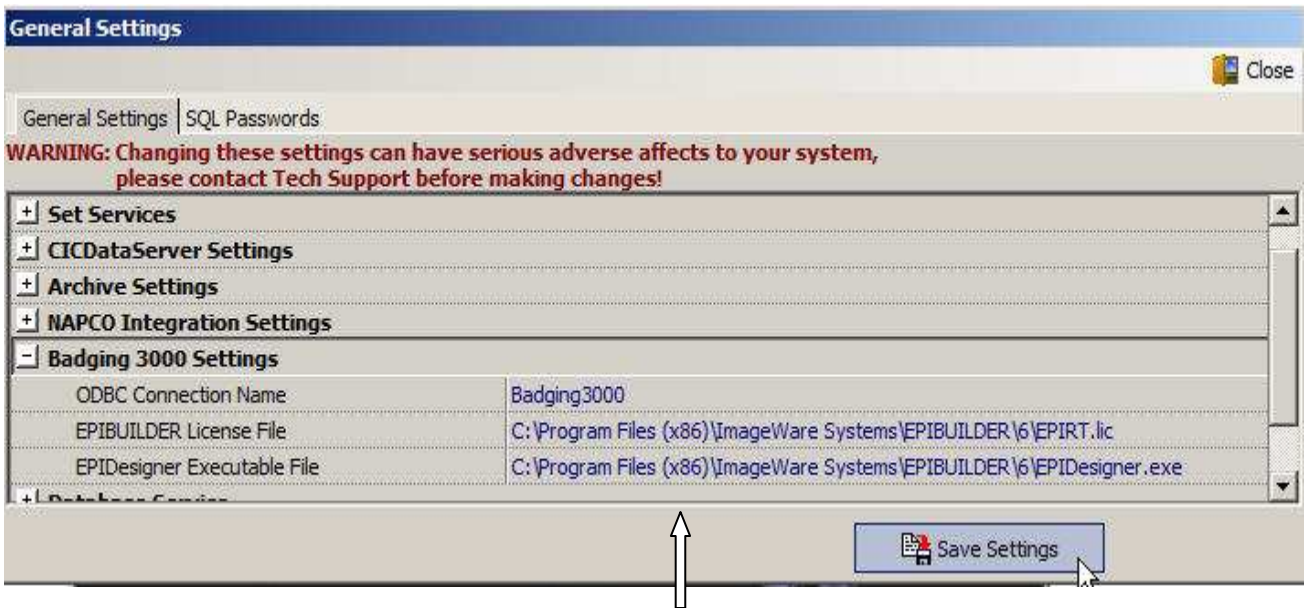


- Click on “General settings” will bring up the settings dialog box.



- In the settings screen, expand “Badging 3000 settings” node and make sure ODBC Connection name is “Badging3000”.

- e. Change the folder path for EPIBUILDER License and Executable files from “C:\Program Files \ImageWare Systems...” to “C:\Program Files (x86)\ImageWare Systems...”. Make sure to include a space before “(x86)”. Click the “Save Settings” and exit all windows.



- f. Launch CardAccess3000 software. Now EPIDesigner functionalities should work on 64 bit windows.

NOTE: If you need further assistance, contact Continental Technical Support at 631-842-9400